

# FOOD PREP TABLE REFRIGERATOR - REGULAR

## MODEL: DSP48-12-S2

Model:	DSP48-12-S2
Rated Voltage:	115V AC
Rated Frequency:	60Hz
Total Input Power:	280W
Total Current:	2.4A
Total Capacity:	11.47 cu ft
Refrigerant:	R290/3.17 oz
Climatic Category:	4/5
Protection Type	I
Design pressure	High Side :300PSIG Low Side:150PSIG
Insulation Blowing Gas	C-pentane
Net Weight:	231 lbs
NEMA Cofig.	5-15P
1/6 Pan Count	12

## STANDARD FEATURES

### BACK MOUNT COMPRESSOR

The back mount compressor structure is placed in the coolest possible area, provides quick and easy service

### HIGH QUALITY STEEL

Interior and exterior uses high-quality steel to minimizes dents, scratches and rust

### HIGH DENSITY POLYURETHANE INSULATION CFC

free and high density cell foam is Eco-friendly and more energy efficient

### STURDY, CLEAN STAINLESS SHELVING

high quality coated stainless shelves prevent peel and rust.

### SELF-CLOSING DOOR SYSTEM

door Automatically closes at 60°

### REFRIGERATORS OPERATE AT

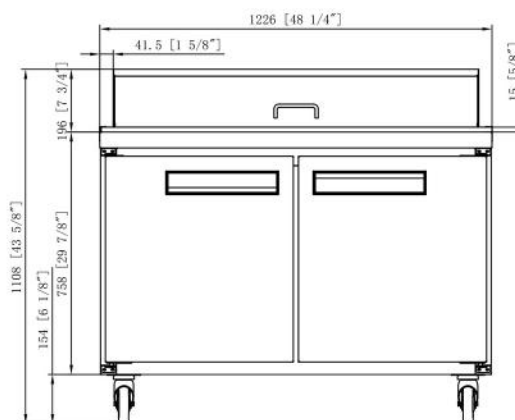
33°- 41° F



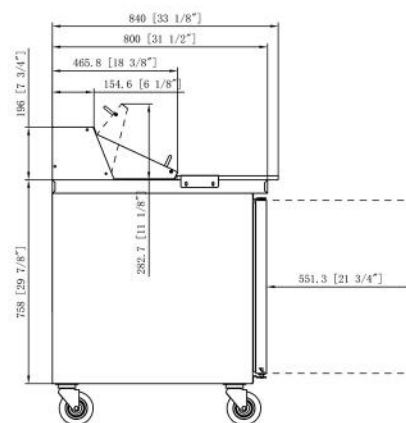
NEMA 5-15P  
115/60/1

## PLAN VIEW

FRONT VIEW



SIDE VIEW



**California Office**  
2488 Peck Road,  
City of Industry, CA 90601  
(562) 568-4060  
www.dukersusa.com

**New Jersey Office**  
475 S Clinton Ave  
South Plainfield, NJ 07080  
(800) 608-9289  
info@dukersusa.com

**Georgia Office**  
6513 Warren Dr  
NW Norcross, GA 30093  
(678) 580-3960  
service@dukersusa.com

**Texas Office**  
1444 N Cockrell Hill Rd  
#104 Dallas, TX 75211  
(469) 421-1040  
Warrenrty@dukersusa.com

## MODEL: DSP48-12-S2

### Features and Benefits

- \* High Resistance to Dust, high quality condenser
- \* R290 Natural Refrigerant, promotes faster cool down and efficient energy consumption
- \* 3-year parts and labor, 5-year compressor warranty
- \* Stainless steel inside and outside, sealed interior floors and round cabinet corners for easy cleaning
- \* Self-closing doors with stay open feature.
- \* Adjustable, heavy duty shelves
- \* Insulated canopy safely maintains a steady temperature range from 33-41 degrees.
- \* 4-inch polycarbonate 1/6 pans with durable clear food pan cover.



### Technical Specifications

Voltage/Frequency	115V 60Hz
Refrigerant	R290
Type of Defrost	Automatic
Exterior Finish	Stainless steel
Interior Finish	Stainless steel
Net Weight	231 bs
Total Capacity	11.47 cu ft
Total Current	2.4A
Climatic Category	4/5
Nema Config.	5-15P



MODEL NO	TEMPERATURE RANGE ( °F )	EXTERNAL DIMENSION WXDHX(INCHES)	PACKING,CARTON WXDHX(INCHES)	DOOR	40GP CONTAINER CERTIFICATION
DSP48-12-S2	33°- 41° F	48⅞" X 31½" X 45⅝" "	49⅝" X 33⅛" X 50¾"	2	46