

SpaceMaker™ iT1900 Ice Cube Machine

Models

- IDT1900W-261V
- IYT1900W-261V



IDT1900W-261V
Shown with optional IBW-M5 Marine Ice Bin

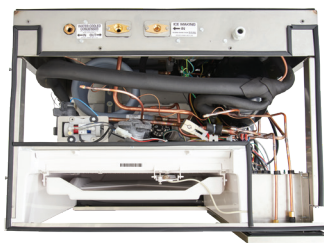
Marine Ice Machine Features

New Indigo SpaceMaker puts the utilities connection through the top panel allowing the machine to come in contact with the back and side walls saving valuable space in the galley.

- Standard IndigoNXT feature set with internal communication system that continually monitors refrigeration and sub-system controls 24/7.
- Front facing evaporator allows access to the Food zone for easy cleaning without removing the top lid.
- Isolation switch immediately cuts power to the entire unit.
- Completely sealed unit, top, front, back, top and sides.
- Meets USPHS specifications
- Top and Side panels designed to be removable even when fixed to the bulkhead, allowing easy access for servicing

Warranty

- 5-year parts-and-labor on evaporator.
- 5-year parts and 3-year labor on compressor.
- 3-year parts-and-labor on all other components.



Ice Shape



Half Dice
 $\frac{3}{8}" \times \frac{1}{8}" \times \frac{7}{8}"$
(.95 x 2.86 x 2.22 cm)



Dice
 $\frac{7}{8}" \times \frac{7}{8}" \times \frac{7}{8}"$
(2.22 x 2.22 x 2.22 cm)

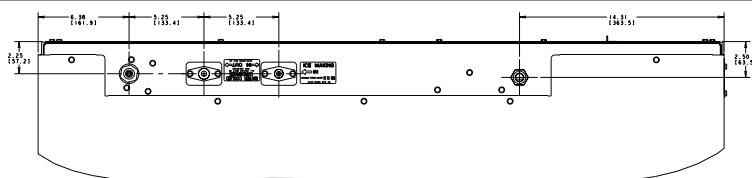


US LISTED

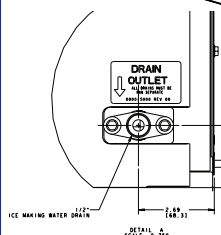
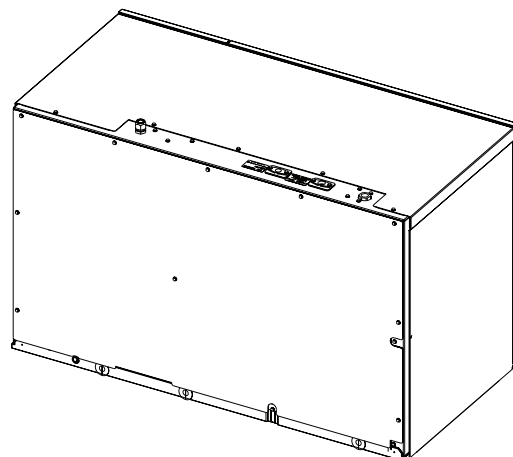
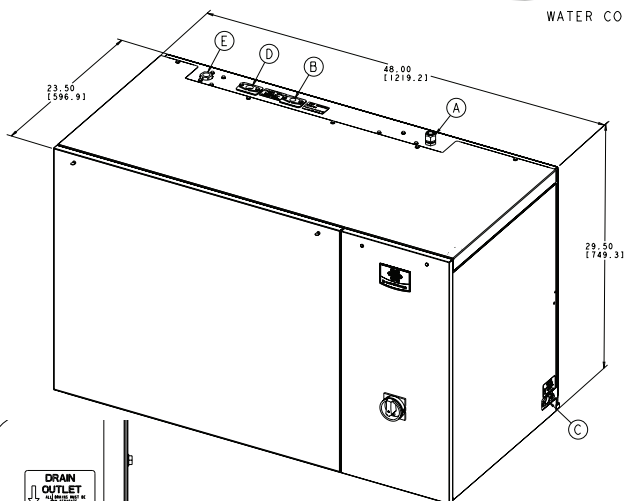


Indigo®NXT SpaceMaker™ iF1900 Ice Cube Machine

BALLOON	DESCRIPTION
A	ELECTRICAL ENTRANCE
B	3/8" ICE MAKING IN
C	1/2" ICE MAKING WATER DRAIN
D	1/2" WATER CONDENSER OUTLET
E	3/8" WATER CONDENSER INLET



WATER CONDENSER INLET AND OUTLET DETAILS
SCALE 0.375



This product is hermetically sealed and contains fluorinated greenhouse gas R410a.

Ice Production 24hours

Model	Ice Shape	70 Air/50F Water 32 Air/21 C Water		90 Air/70F Water 21 Air / 10C Water		kWh/100 lbs-45.4 kg ice	gal/100 lbs ice	
IDT1900W	dice	1900 lbs	862 kg	1666 lbs	755 kg	3.51	20 Gal.	75.7 L
IYT1900W	half-dice	1960 lbs	889 kg	1758 lbs	797 kg	3.44	20 Gal.	75.7 L

Water Cooled Condenser Water usage /100 lbs /45.4 kgs. of ice 145 gal/549 L

Series 1900	
IDT1900W	Dice Size
IYT1900W	half Cube Size
29.5" H x 48" W x 24.5" D	
74.9 H x 121.9 W x 62.2 D cm	
Approx. Net Wt.	337 lbs / 153 kg
Approx. Gross Wt.	352 lbs / 160 kg

Ice Machine Electric	
Electricity	208-230 v
Phase	Single
Cycle	60 Hz
Max fuse size	30 amp
Min Ampacity	18.8 A
Machine Rating	2500 W

Ice Machine Operating Limits	
Ambient Temperature	40 to 110 F (4.4 to 43.3C)
Potable Water Temp.	40 to 90 F (4.4 to 32.2C)
Water Pressure	Min 20 psi (137.9 kPa)
	Max . 80 psi (551.1kPa)
Condenser Water	Min 20 psi (137.9 kPa)
	Max. 276 psi (1902.95kPa)

Accessories

**LuminIce® II
Virus and Bacteria Inhibitor**
controls viruses and bacteria inside the ice machine



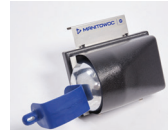
Arctic Pure® Plus Water Filters
reduce sediments and chlorine contaminants down to .5 microns.
Use with a Pre-filter is recommended.



IAuCS®
schedules and performs routine ice machine cleaning automatically.



External Scoop Holder
protect the ice scoop with the NSF approved versatile scoop holder.



Manitowoc Ice reserves the right to make changes to the design or specifications without prior notice.